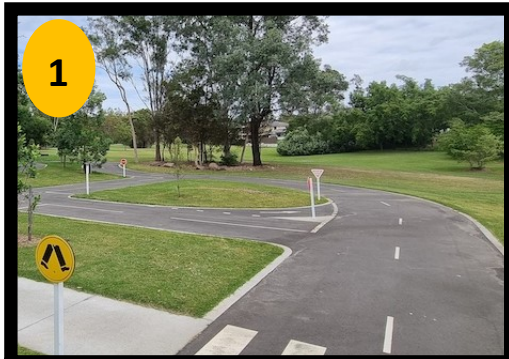


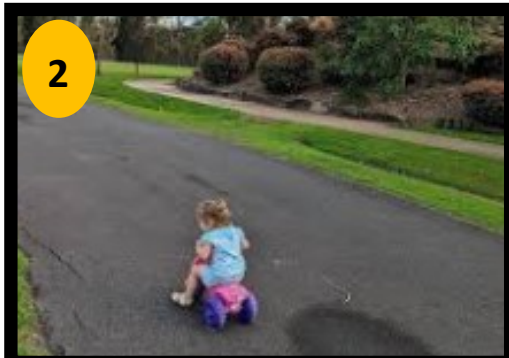
SCOTTSDALE LEARN TO RIDE BIKE TRACK



1

LEARN TO RIDE TRACK

Mini road network including road signage. Target—ages 3+



2

TODDLER RIDING TRACK

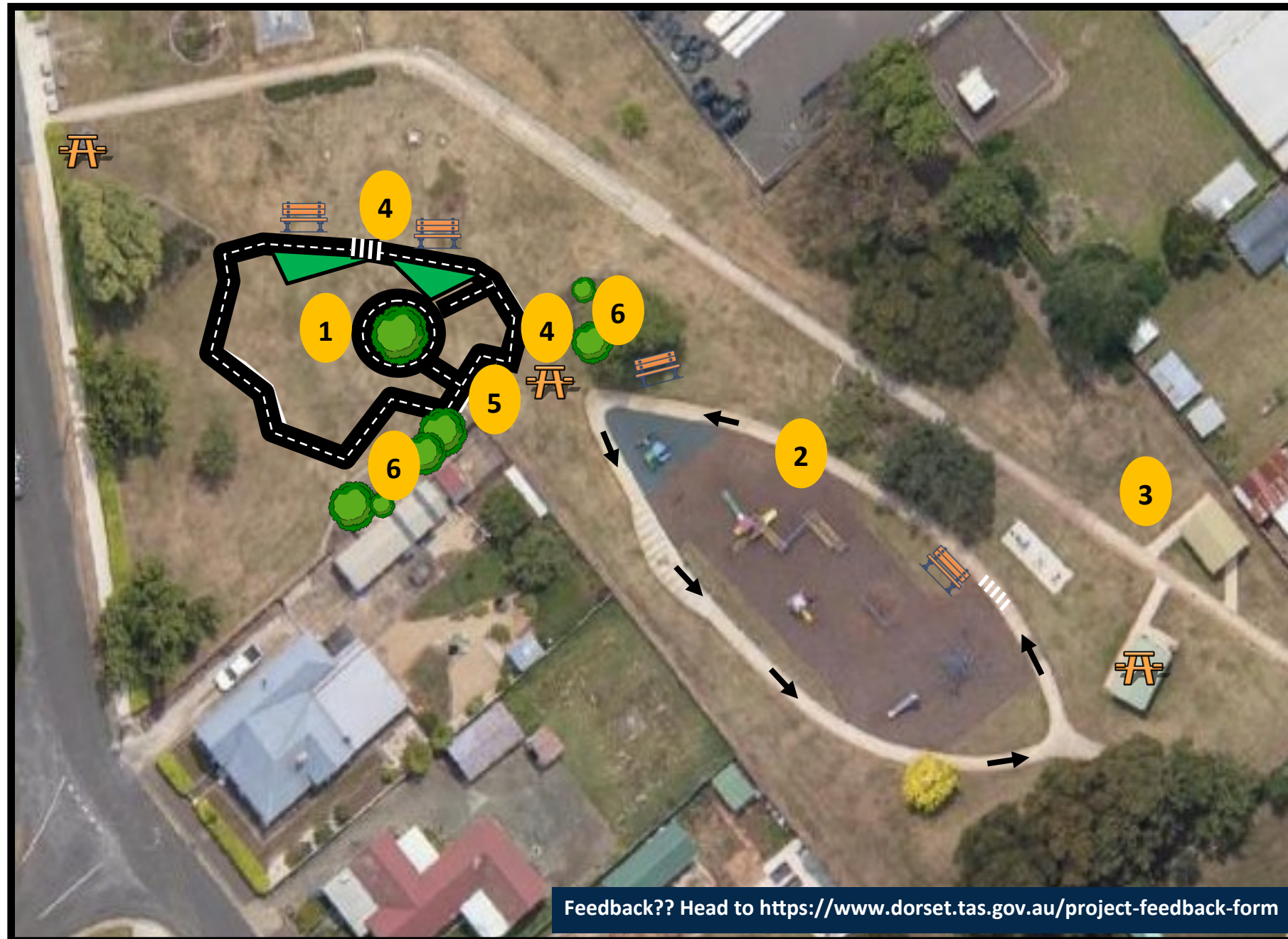
Renewed line marking on existing concrete pathway. Target—up to 3.



3

WATER FOUNTAIN

Water refill station



Feedback?? Head to <https://www.dorset.tas.gov.au/project-feedback-form>

The Learn to Ride Bike Track is Stage One of the Scottsdale Bike Park Project.

This project has been funded by the Premier's Fund for Children and Young People (\$50,000), a community member donation (\$30,000) and Dorset Council.

Stage Two of the project will be to build a pump/jump style track. Further funding will be required in order to complete this stage with a location yet to be confirmed.

The Children's Reserve will also be undergoing improvements to the overall playground as part of a separate project. Playground Upgrade project commencing mid 2024.

Please note: Locations are approximate. Not to scale.



4

SEATING

Benches to sit and relax



5

CAFÉ/SHOP

Pit stop to take a break and have a play.



6

REVEGETATION

Revegetated garden beds. Trees for shade and shrubs/grasses.